

Batemans Bay Marina Regatta



Saturday 23rd & Sunday 24th April 2022

Sailing Instructions

1 Rules

This regatta is conducted under the authority of the Australian Sailing. The regatta will be governed by *The Racing Rules of Sailing (RRS) 2021-2024*, the prescriptions and special regulations of the Australian Sailing, the rules of the class(es), except as any of these are changed by these sailing instructions, and by these sailing instructions.

2 Entries

- 2.1** Eligible boats may be entered by completing online registration with Batemans Bay Sailing Club (BBSC) as per the Notice of Race. Eligibility requirements for competitors will comply to Australian Sailing Special Regulations Part 1 Category 7 for trailerable yachts and Australian Sailing Special Regulations Part 2 for Off the Beach boats. Any yacht not having paid the appropriate race entry fee or completed the online race entry before the start of the regatta will be ranked as a non-starter.
- 2.2** All competitors taking part in BBSC races do so at their own risk and responsibility. The BBSC is not responsible for the seaworthiness of a boat participating in the regatta or the adequacy of its equipment. Attention is drawn to RRS 3.

3 Competitors Meeting/Sign On/Sign Off

There will be a competitors meeting scheduled for 1100 on Saturday 23rd April 2022 at the BBSC clubhouse. Competitors will be required to sign on prior to the first warning signal on both days of the regatta and sign off prior to 1700 on both days of the regatta. Sign on and sign off sheets will be set up at the Batemans Bay Sailing Club clubhouse at Hanging Rock, Batemans Bay. Failure to sign on or off may result in disqualification.

4 Notices to Competitors

Notices to competitors will be posted on the official notice board located in the clubhouse.

5 Changes in Sailing Instructions

Any change to these sailing instructions will be posted 1 hour before the commencement of Race 1 or Race 3, or may be advised orally on the water by hailing from the committee boat. For such purpose the committee boat will raise code flag L and leave it hoisted until immediately prior to the warning signal for the first division of the race about to be started. A single sound signal may be made when the code flag is hoisted. The onus shall be on each yacht participating in the race to communicate with the committee boat to determine the nature of the variation.

6 Signals Made Ashore

- 6.1 Signals made ashore will be displayed at the rigging area at Corrigans Beach.
- 6.2 Flag AP with two sound signals (one when lowered) means 'The race is postponed'. The warning signal will be made not less than 30 minutes after AP is lowered ashore.

7 Schedule of Races

Races for Divisions 1 to 6 are scheduled as follows:

<i>Race</i>	<i>Day and date</i>	<i>Time of Division 1 warning signal</i>
1	Saturday 23rd April 2022	1225hrs
2	Saturday 23rd April 2022	ASAP after race 1
3	Sunday 24th April 2022	1055hrs
4	Sunday 24th April 2022	ASAP after race 3

Divisions 7 to 9 will sail multiple short races over a separate inshore course area.

Division 7 to 9 races will be sailed back to back from 1230 on Saturday 23rd April 2022 and from 1100 on Sunday April 24th 2022. The start boat for Divisions 7 to 9 will display Code flag G to indicate that further race(s) are to be sailed. When Code flag G is lowered this will indicate no further races that day.

No warning signal shall be made after 1500 on Sunday 24th April 2022.

8 Division / Class Flags

8.1 Class flags will be

Class	Flag	
Div 1	Dinghies yardstick up to 100	numeral pennant 1
Div 2	Dinghies yardstick 100 up to 130	numeral pennant 2
Div 3	Sports yachts CBH 0.8 and over	numeral pennant 3
Div 4	Trailerable yachts CBH up to 0.8	numeral pennant 4
Div 5	Off the beach multihulls yardstick up to 84	numeral pennant 5
Div 6	Off the beach multihulls yardstick 84 and over	numeral pennant 6
Div 7	Open division (if required)	numeral pennant 7
Div 8	Dinghies yardstick 130 to 155	numeral pennant 8
Div 9	Dinghies yardstick over 155	numeral pennant 9

Competitors with dinghies yardstick 100 up to 130 may enter Division 7 if they would prefer to sail the inshore course. This must be made clear on the completed online entry.

8.2 The race committee may create and abolish divisions at its discretion.

Divisions may be started together at the discretion of the Race Committee or race officer.

9 Racing Area

The racing area will be on Batemans Bay with an inshore course area for Divisions 7 to 9 to the west of Snapper Island and an offshore course area for Divisions 1 to 6 to the east of Snapper Island to the east of Snapper Island. Competitors are requested to avoid sailing between Snapper Island and Observation Head due to submerged rocks.

10 Division 1 to 6 Courses

10.1 Marks 1,2 and 3 will be laid in an approximately equal triangle. Mark 1(a) will be laid in the same direction from the starting line as mark 1, but at a greater distance from the starting line. Mark 2 (a) will be laid outside mark 2. See Illustration A.

10.2 A **RED** flag flying from the committee boat means, “leave all marks to port”, and indicates that mark 2 is on the left hand side of the course. A **GREEN** flag means “leave all marks to starboard” and indicates that mark 2 will be on the right hand side of the course.

10.3 The approximate bearing to the first mark may be displayed on the committee boat on a white board at the stern of the boat.

10.4 The table below shows the order in which the marks are to be rounded or passed as well as the number of rounds to be completed in each division.

Div .1 Start -1(a) - 2(a) - 3 - 1(a) - 3 - 1(a) - 2(a) - 3 - Finish

Div. 2 Start -1 - 2 - 3 - 1 - 3 - 1 - 2 - 3 - Finish

Div. 3 Start -1(a) - 2(a) - 3 - 1(a) - 3 - 1(a) - 3 - Finish

Div. 4 Start -1 - 2 - 3 - 1 - 3 - Finish

Div. 5 Start -1(a) - 2(a) - 3 - 1(a) - 3 - 1(a) - 3 - Finish

Div. 6 Start -1(a) - 2(a) - 3 - 1(a) - 3 - Finish

11 Divisions 1 to 6 Marks

Marks will be orange inflatable cylinders except marks 1(a) and 2(a) which will be yellow inflatable cylinders.

12 The Start

The start line will be between an Orange flag on the start boat and an Orange buoy with an O flag.

- 12.1** Races will be started using rule 26. Sound signals may be made. An Orange Flag will be hoisted 5 Minutes before the first warning signal of that sequence, it will be dropped 5 minutes after the last start of that sequence. A boat starting later than 5 minutes after her start will be scored DNS, this changes RRS A4.
- 12.2** Boats whose preparatory signal has not been made shall keep clear of the starting area and of all boats whose preparatory signal has been made.

13 The Finish

The finish line will be between a Blue flag on the finish boat and an Orange buoy with an O flag.

When the finish boat is flying the blue on station flag boats will not pass through the finish line unless they are finishing.

14 Divisions 1 to 6 Time Limit

The time limit for each race will be 45 minutes after the first boat in each division has finished the race. Boats failing to finish within the time limit will be scored Did Not Finish. This changes rule 35.

15 Divisions 7 to 9 Marks and Courses

Divisions 7 to 9 will sail a trapezoid course as set out in Illustration B.

There will be 4 course marks plus a Start and Finish mark.(6 in total). There will also be a substitute mark for a 'Missing Mark' situation.

Marks 1 and 4 will be drum shaped with a green flag on top.

Marks 2 and 3 will be drum shaped with a red flag on top.

The Start Mark (Pin) will be a white and yellow tube with a flag on top.

Missing Mark Fluorescent Orange round buoy.

The boat end of the start line is a pole on the Start boat.

The Finish mark will be a black and yellow paneled drum shape with a flag on top.

The courses:

Division 7 and 8

Course (O)1:Start-1-2-3-Finish

Course (O)2:Start-1-2-3-2-3-Finish

Course (O)3:Start-1-2-3-2-3-2-3-Finish

Division 9

Course (I)1:Start-1-2-3-Finish

Course (I)2:Start-1-4-1-2-3-Finish

Course (I)3:Start-1-4-1-4-1-2-3-Finish

The course to be sailed will be displayed on a board on the Start boat.

16 Divisions 7 to 9 Penalty Turns

The Penalty will be changed to a 1 turn Penalty which includes 1 tack and 1 gybe in the same direction. This changes rules 44.1 and 44.2.

17 Divisions 7 to 9 Time Limit

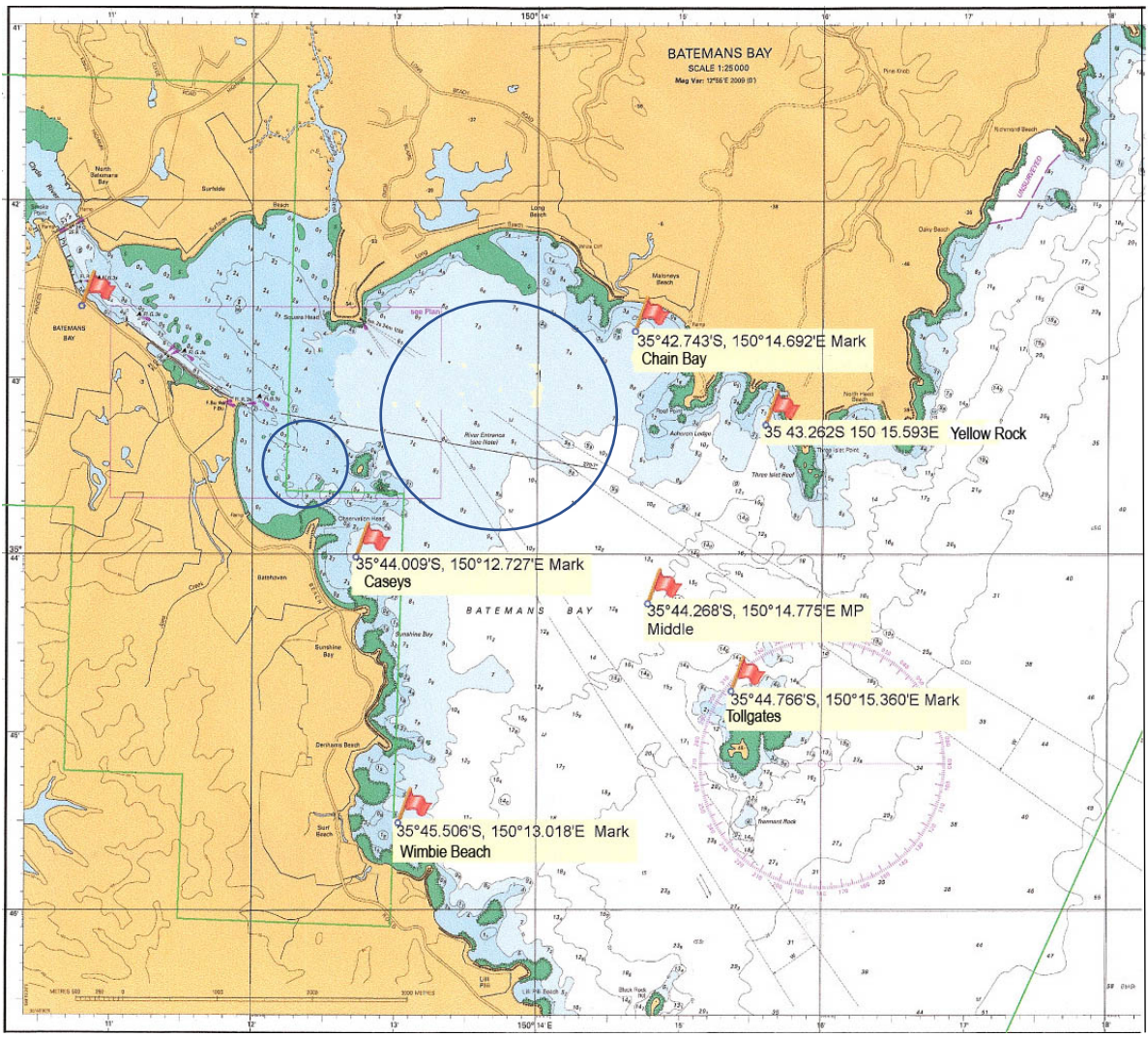
60 minutes per race with a target time of 20 to 25 minutes.

18 Protests

Protest forms will be available at the BBSC clubhouse and may be lodged with the clubhouse manager within 2 hours of the conclusion of racing on the day of the incident. Protests will be heard as soon as possible after any protest form has been lodged.

19 Presentation and Prizes

Prizes will be awarded as set out in the Notice of Race. There will be no presentation. Prizes will be mailed out to the winners.



Map of Batemans Bay with course areas indicated.
 The smaller circle is the approximate course area for Divisions 7 to 9.
 The larger circle is the approximate course area for Divisions 1 to 6.

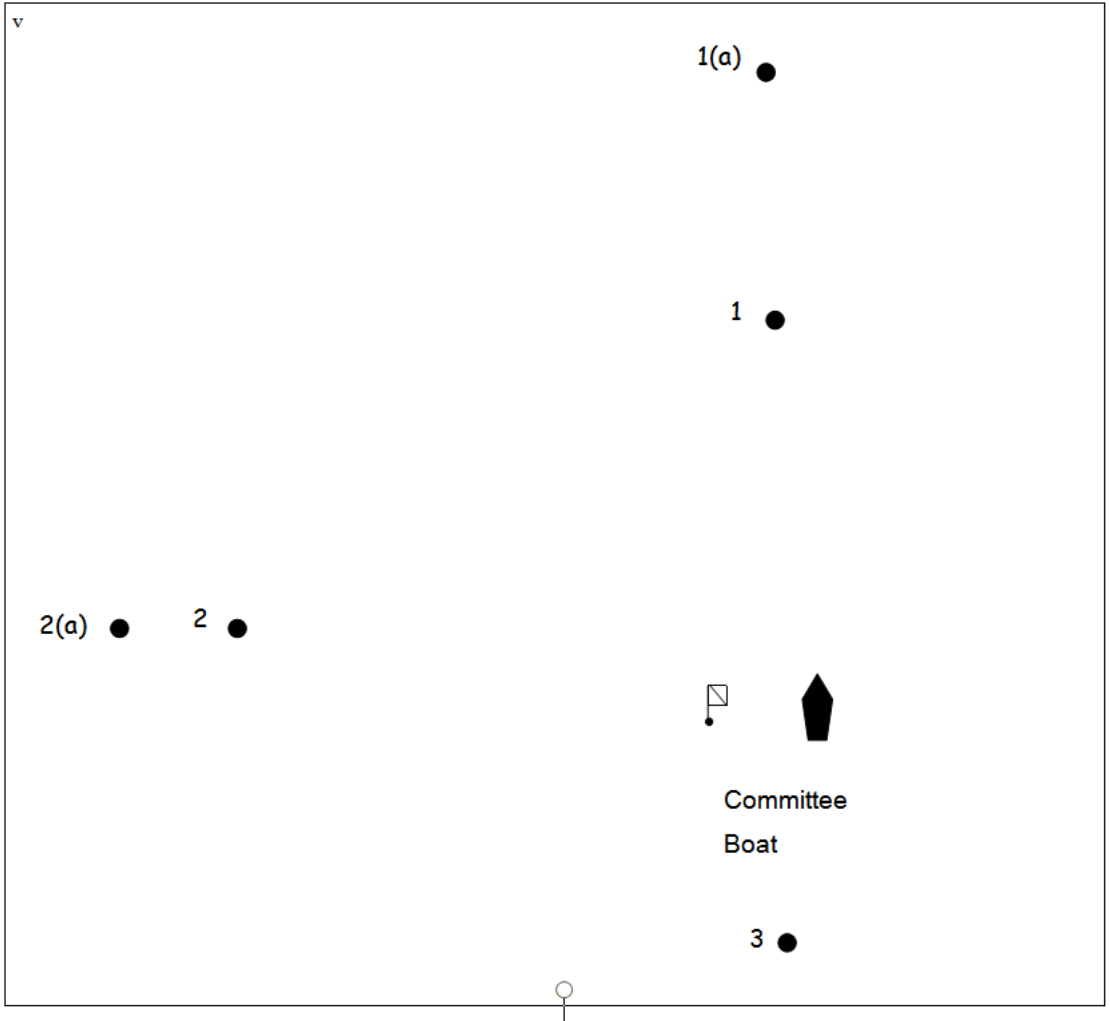


Illustration A

Course Diagram for Divisions 1 to 6 with approximate mark positions.

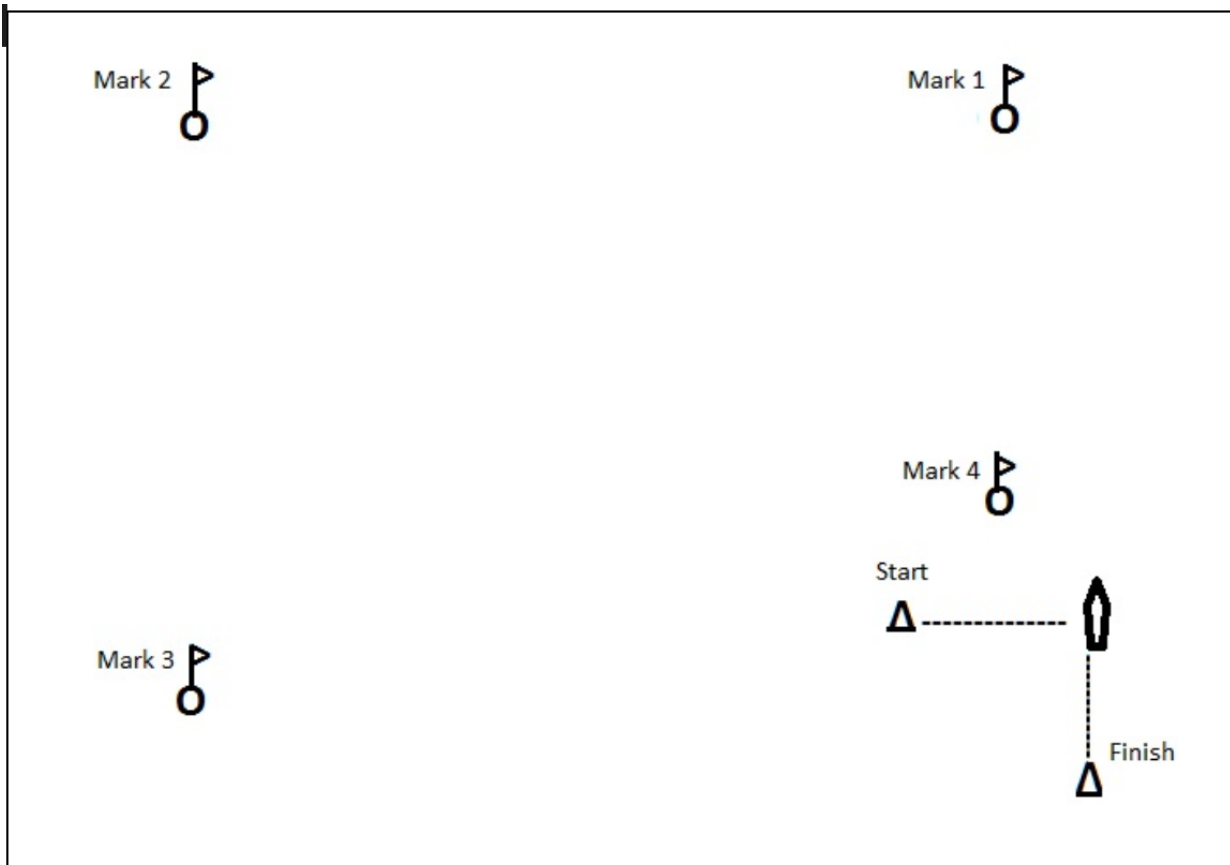


Illustration B.

Inshore course diagram for Divisions 7,8 and 9 showing approximate mark positions.

Courses.

Division 7 and 8

Course (O)1:Start-1-2-3-Finish

Course (O)2:Start-1-2-3-2-3-Finish

Course (O)3:Start-1-2-3-2-3-2-3-Finish

Division 9

Course (I)1: Start-1-2-3-Finish

Course (I)2:Start-1-4-1-2-3-Finish

Course (I)3:Start-1-4-1-4-1-2-3-Finish

