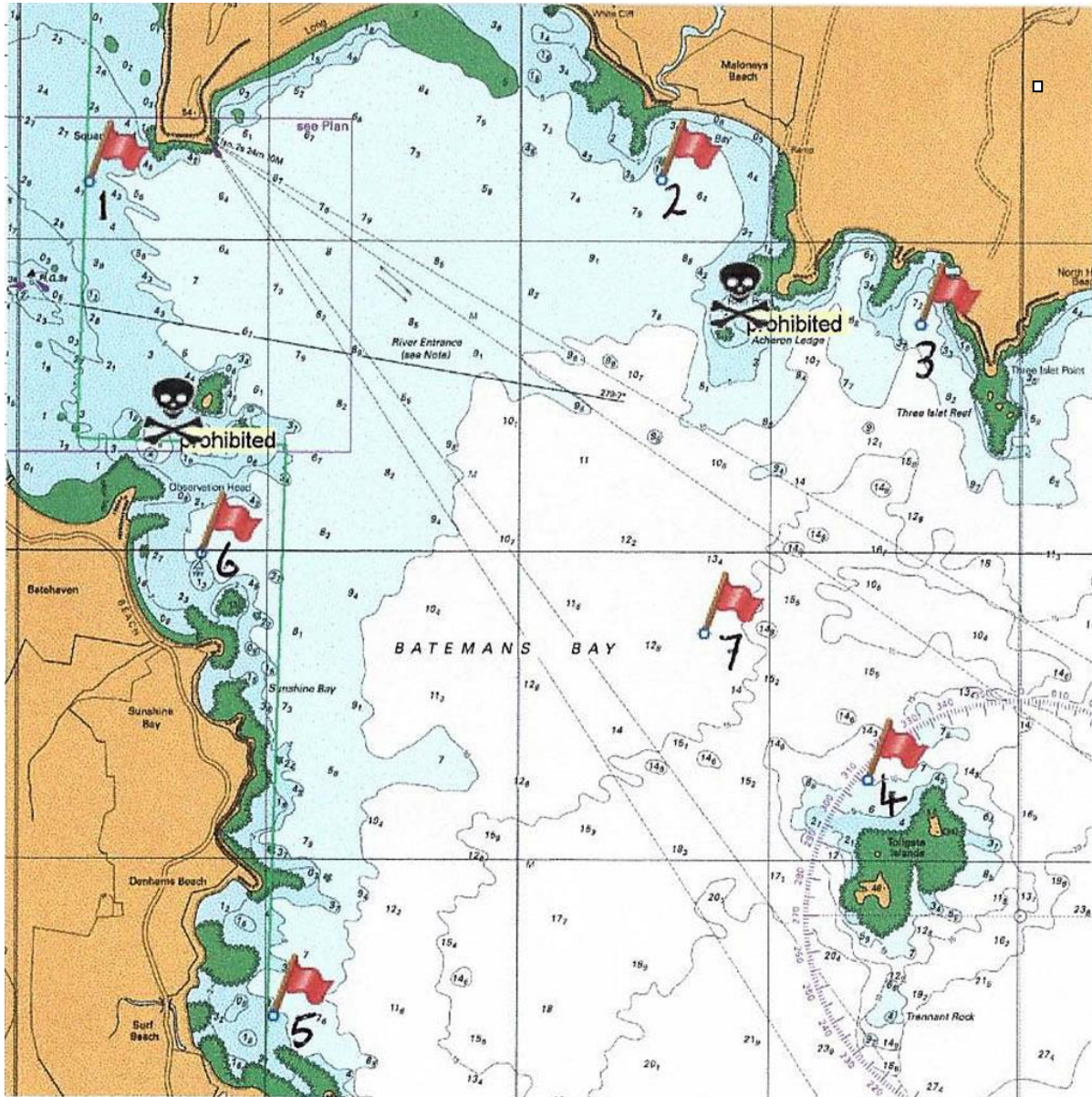


BBSH HANDBOOK SECTION 1, PART 1: MARK MAP

Approximate mark positions Batemans Bay



1. Square Head. 2. Chain Bay. 3. Yellow Rock. 4. Tollgate
5. Wimbie Beach. 6. Caseys Beach. 7. Marine Park Middle Mark.

Snapper Island, the Tollgate Island and Black Rock may also be a mark in a course.

DISCLAIMER

Not for navigational purposes.

Mark positions are indicative only.

A laid marks may be within the general area outlined.

WARNING

Skull and cross bones indicated prohibited sailing areas.